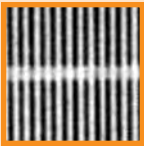
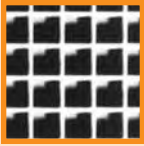


STRUCTURAL SHAPES

LATTICE/TRELLIS PANELS



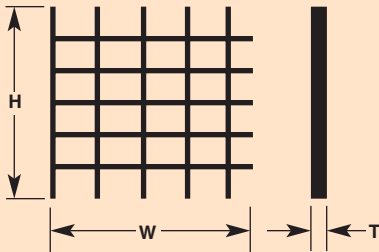
STYLE A



STYLE B



STYLE C

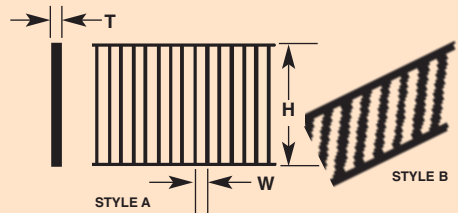


Use for latticework or trelliswork screens or ornamental structures. LAT-70 has notches to permit modification using Styrene Strips. Precision Injection Molded in Styrene (10, 60 & 70) or Polyethylene Plastic (20, 40 & 50). Ideal for architectural or doll-house miniature models.

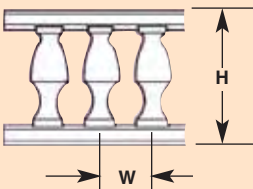
CODE	ACTUAL SIZE						PATTERN		STYLE
	'H'		'W'		'T'				
LAT-10	2-1/8"	54.0mm	15/16"	23.8mm	1/32"	0.8mm	.039	1.0mm	A
LAT-20	4"	101.6mm	1-1/4"	31.8mm	1/16"	1.6mm	.040	1.0mm	B
LAT-40	4-1/8"	104.8mm	2"	50.8mm	3/32"	2.4mm	.040	1.0mm	C
LAT-50	3-15/16"	100.0mm	2-7/16"	61.9mm	5/64"	2.0mm	.075	1.9mm	B
LAT-60	1-7/8"	47.6mm	1-7/16"	36.5mm	3/32"	2.4mm	15/64"	6.0mm	B
LAT-70	5-7/8"	149.2mm	2-7/8"	73.0mm	1/8"	3.2mm	5/8"	15.9mm	B

RAILINGS/TRELLIS/FENCING

Use for hand rails, stair rails, roof trusses, grating and other steel structures. Precision Injection Molded in Styrene Plastic. May also be used for trellises, fencing, window bars, etc.



CODE	ACTUAL SIZE						LENGTH		STYLE
	'H'		'W'		'T'				
RR-2	1/4"	6.4mm	3/32"	2.4mm	.040	1.0mm	7"	175mm	A
RR-3	9/32"	7.1mm	3/32"	2.4mm	.030	0.8mm	6-5/8"	165mm	B
RR-4	13/32"	10.3mm	3/32"	2.4mm	.050	1.3mm	6-7/8"	175mm	A
RR-6	19/32"	15.1mm	3/32"	2.4mm	.055	1.4mm	6-7/8"	175mm	A
RR-7	5/8"	15.9mm	1/8"	3.2mm	.045	1.1mm	7"	175mm	B
RR-8	25/32"	19.8mm	1/8"	3.2mm	.055	1.4mm	7"	175mm	A
RR-12	1-7/32"	31.0mm	3/16"	4.8mm	.055	1.4mm	6-1/2"	165mm	A
RR-16	1-39/64"	40.9mm	3/16"	4.8mm	.055	1.4mm	6-1/4"	160mm	A
RR-20	2-11/32"	59.5mm	1/4"	6.4mm	.085	2.2mm	5"	125mm	A



BALCONY RAILINGS

Use for balcony railings or bannisters in residential, commercial or civic buildings where fancy handrailing is desired. Precision Injection Molded in Brown Styrene Plastic.

CODE	SCALE	ACTUAL SIZE					
		'H'		'W'		LENGTH	
BALC-48	O 1:48	23/32"	18.3mm	9/32"	7.1mm	6-1/2"	165mm
BALC-100	HO 1:100	25/64"	9.9mm	9/64"	3.6mm	6-1/2"	165mm
BALC-200	N 1:200	7/32"	5.6mm	3/32"	2.4mm	6-1/2"	165mm

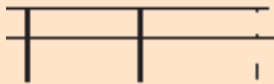


IN A HURRY?

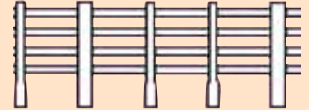
Call our Toll Free 800 Order Line and pay by VISA/MasterCard.
(800) 666-7015 8:00 am-2:00 pm Pacific Time

STRUCTURAL SHAPES

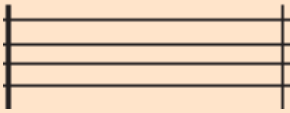
FENCES & RAILINGS



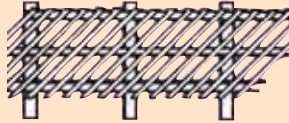
STYLE A



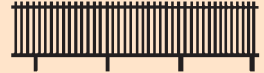
STYLE B



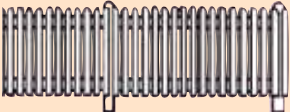
STYLE C



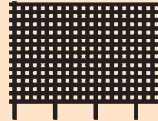
STYLE D



STYLE E



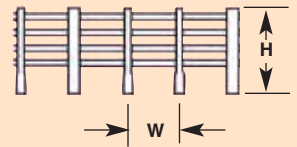
STYLE F



STYLE G



STYLE H



Use for fences commonly found in agricultural, residential, industrial, commercial and many other settings. Some styles may also be used for railings or trellises. Precision Injection Molded in White Styrene Plastic or acid etched in Brass (as noted). Ideal for all model construction.

CODE	SCALE	ACTUAL SIZE				STYLE	MATERIAL		
		'H'		'W'				LENGTH	
FEN-12	N 1:200	1/4"	6.4mm	25/64"	9.9mm	9-1/2"	240mm	A Ranch Post	Brass
FEN-14	HO 1:100	11/32"	8.7mm	1/4"	6.4mm	20"	500mm	B Ranch Post	Styrene
FEN-15	HO 1:100	17/32"	13.5mm	9/16"	14.3mm	9-1/2"	240mm	C Ranch Post	Brass
FEN-18	O 1:48	1-11/64"	29.8mm	57/64"	22.6mm	30"	750mm	B Ranch Post	Styrene
FEN-24	HO 1:100	11/32"	8.7mm	11/32"	8.7mm	20"	500mm	D Diag. Picket	Styrene
FEN-28	O 1:48	45/64"	17.9mm	45/64"	17.9mm	30"	750mm	D Diag. Picket	Styrene
FEN-31	1:500	11/64"	4.4mm	1/4"	6.4mm	75"	1900mm	E Picket	Brass
FEN-32	N 1:200	15/64"	6.0mm	15/64"	6.0mm	52"	1300mm	E Picket	Brass
FEN-34	HO 1:100	23/64"	9.1mm	41/64"	16.3mm	20"	500mm	F Picket	Styrene
FEN-38	O 1:48	43/64"	17.1mm	1-1/4"	31.8mm	30"	750mm	F Picket	Styrene
FEN-42	N 1:200	1/2"	19.1mm	3/16"	4.8mm	26"	650mm	G Chain Link	Brass
FEN-52	N 1:200	1/4"	6.4mm	1/16"	1.6mm	26"	650mm	H Picket	Styrene
FEN-54	HO 1:100	29/64"	11.5mm	3/32"	2.4mm	28"	700mm	H Picket	Styrene
FEN-58	O 1:48	59/64"	23.4mm	13/64"	5.2mm	28"	700mm	H Picket	Styrene
FEN-64	HO 1:100	5/16"	7.9mm	1/16"	1.6mm	20"	500mm	H Picket	Styrene
FEN-68	O 1:48	5/8"	15.9mm	3/32"	2.4mm	20"	500mm	H Picket	Styrene



CUSTOM CHAIN LINK FENCE

Build your own chain link fence in the same manner as real life. First, install posts (75" (1900mm) actual furnished), then attach fencing. Two (1-1/16" (27mm) high by 24" (600mm) long actual) strips of fencing included. Furnished height is 8' (2.4m) in HO scale. May also be used in other scales. The same material is also available in 7" x 10" (175mm x 250mm) sheets (see later in this Catalog). To represent razor wire for security fencing, add curled piano wire or the equivalent to the top of your fence.

CODE: FEN-4



NEED IT FAST?

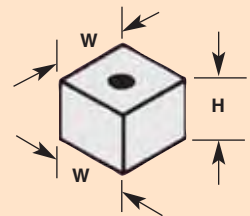
Specify Fed-Ex or UPS Next Day Service. We also offer 2 and 3 Day Air Service, as well as Economical Ground.



ABS COLUMN BASE MOUNTS

Use to quickly and effectively mount vertical columns (codes H-4 through H-24) to your model base. Precision Injection Molded in Dark Gray ABS Plastic.

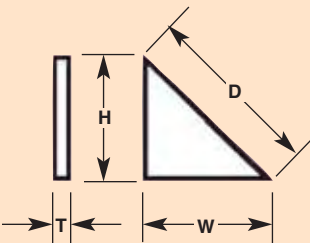
CODE	TO FIT
	COLUMN
BM-4	4
BM-6	6
BM-8	8
BM-10	10
BM-12	12 & 14
BM-16	16 & 18
BM-20	20 & 24



ABS COLUMN BLOCKS

Use to quickly and effectively mount vertical square tubing (codes ST-12 through ST-24) to your model base. Also used for concrete blocks, lamp bases, etc. Precision Injection Molded in Light Gray ABS Plastic.

CODE	ACTUAL SIZE				TO FIT
	'H'		'W'		TUBE
CB-12	3/8"	9.5mm	9/32"	7.1mm	12
CB-14	3/8"	9.5mm	5/16"	7.9mm	14
CB-16	3/8"	9.5mm	3/8"	9.5mm	16
CB-18	1/2"	12.7mm	7/16"	11.1mm	18
CB-20	1/2"	12.7mm	1/2"	12.7mm	20
CB-24	5/8"	15.9mm	5/8"	15.9mm	24



SUPPORT TRIANGLE GUSSETS

Use to quickly and effectively mount horizontal pieces off of vertical columns, tanks or other structures. Precision Injection Molded in Clear Acrylic Plastic.

CODE	ACTUAL SIZE					
	'H' & 'W'		'D'		'T'	
G-8	1/4"	6.4mm	11/32"	8.7mm	.050	1.3mm
G-12	3/8"	9.5mm	1/2"	12.7mm	1/16"	1.6mm
G-16	1/2"	12.7mm	11/16"	17.5mm	1/16"	1.6mm
G-20	5/8"	15.9mm	7/8"	22.2mm	3/32"	2.4mm
G-24	3/4"	19.1mm	1-1/32"	26.2mm	3/32"	2.4mm
G-28	7/8"	22.2mm	1-7/32"	31.0mm	1/8"	3.2mm
G-32	1"	25.4mm	1-13/32"	35.7mm	1/8"	3.2mm

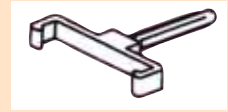


IN A HURRY?

Call our Toll Free 800 Order Line and pay by VISA/MasterCard. (800) 666-7015 8:00 am-2:00 pm Pacific Time.

STRUCTURAL FITTINGS

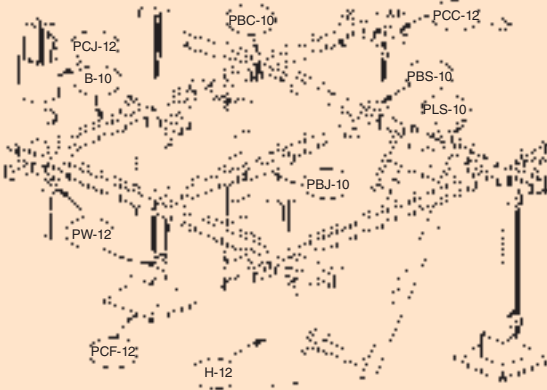
LADDER CLIPS



Use for securing Ladders against structures and other towers. Designed for adjustable clearance from the mounting surface by simply trimming the stem length. Use SX as mounting device or drill 1/16" hole (1.6mm) Precision Injection Molded in Clear Acrylic Plastic.

CODE	TO FIT LADDER	SX SIZE	STEM O.D.
LC-8	8	SX-2	1/16" 1.6mm
LC-12	12	SX-3	3/32" 2.4mm
LC-16	16	SX-3	3/32" 2.4mm
LC-24	24	SX-3	3/32" 2.4mm

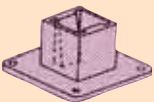
CONSTRUCTION STUDY FITTINGS & KITS



The Construction Study System and Fittings allows designers to facilitate the structural arrangement and layout of equipment and structures in preliminary form and educators to demonstrate structure design and strength in three dimensions. This quick and easy to use, and re-use, system provides complete flexibility and is presented solely as a design tool - a method of thinking and expressing in three dimensions. All parts are precision Injection Molded in Dark Gray ABS Plastic. The components are designed to work only with our H-12 and B-10 structural members.

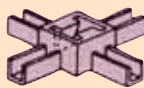
Available both in Kit form or by individual products. Kits include a selection of the below components as well as scale figures and other definitive scale parts to construct the diagram at left.

CODE	SCALE
KIT-5029	1/4" = 1'-0" 1:48
KIT-5030	3/8" = 1'-0" 1:32
KIT-5031	1/2" = 1'-0" 1:24
KIT-5032	3/4" = 1'-0" 1:16



Column Footer
CODE: PCF-12

Provides a firm support for H-12. May be temporarily positioned with double stick tape. Use PW-12 for secure fit.



Column Cross
CODE: PCC-12

Provides a quick and easy way to attach B-10 cross members to H-12 columns. Use PW-12 for secure fit.



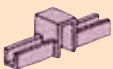
Column Splice
CODE: PCJ-12

Provides a quick and easy way to attach two H-12 columns together. Use PW-12 for secure fit.



Column Wedge
CODE: PW-12

Acts as a locking wedge for securing the Column Footer, Column Cross or Column Splice to the column.



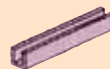
Beam Cross
CODE: PBC-10

Snaps over primary B-10 members to allow easy installation of secondary B-10 members.



Beam Support
CODE: PBS-10

Snaps over primary B-10 members to allow easy installation of secondary B-10 members.



Beam Splice
CODE: PBJ-10

Provides a firm support for joining two B-10 members together.



Ladder Support
CODE: PLS-10

Provides a firm support for a ladder or stair by snapping over a B-10 member.