



KIT-1

SIMPLE SPAN BRIDGES

Two authentically engineered Simple Span Bridges to add interesting detail to any layout. May be used to fit many applications, including highway, railway or terrain crossing. Kit contains enough parts to construct one of each bridge. Landscaping not included. See page 133 for complete Kit listing.

TRUSS BRIDGE

The grandfather of bridges, authentically duplicated in plastic. This Truss Bridge is the most common steel bridge found in North America, if not the world, and fits both steam and diesel eras. Can be easily modified in length or width to fit all your needs. The importance of this bridge design was that greater distances could be spanned, resulting in less supports. A river or gorge can be crossed with fewer piers while still supporting sizeable loads. This Kit reflects a 120'-0" (36.5m) long, 17'-0" (5m) wide (single track) steel truss bridge. Realistic detailing tips allow unequalled realism and make this structure a definite foreground focal point. For a real attention getter, put two or three in-line over one span. A must for every layout. See page 133 for complete Kit listing.



KIT-2



KIT-7

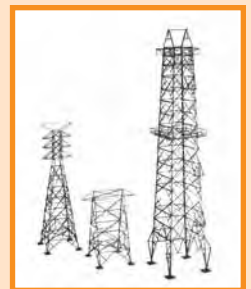
OLD-TIME MOVING BRIDGE

Here is a replica of one of the first draw bridges that actually opens horizontally, not vertically, by means of a central pivot system. The real bridge, now abandoned, may be found crossing the Christina River in Delaware as part of the Pennsylvania Railroad, Delmarva division. It's a scratch builder's dream having character and charm, and a challenge to your detailing expertise.

See page 133 for complete Kit listing.

ELECTRICAL TOWERS & OIL WELL

Your modern day countryside layout won't be complete without Electrical Towers. Add life-like realism to your layout with this two-part Kit. Construct these towers in the same manner as your local power company and place them throughout the countryside. Or build yourself an oil drilling rig to supply your refinery. In either case, these graceful structures will add beauty and character to your layout. Kit contains enough parts to build both Electrical Towers OR one Oil Well. See page 133 for complete Kit listing.



KIT-5



KIT-12

TWIN LAMP POSTS

Simple to build 45' Twin Lamp Post with numerous uses including railroad service, terminal and yard lighting, or city street, industrial and security lighting. These lamp posts look best when used in multiples, and can help to visually group or integrate various viewing areas on your layout. This Kit consists of four lamp posts and is typical of those found in industrialized nations. They fit any time period between 1950's and today. See page 133 for complete Kit listing.

BILLBOARDS

No contemporary layout is complete without the great American Billboard. From rural countryside to major metropolis, you can't escape these colorful structures. This Kit depicts the modern day steel type and contains enough material to build four independent billboards, including posters. See page 133 for complete Kit listing.



KIT-13



KIT-10

SERVICE PLATFORM

Service Platforms are an integral and common part of a locomotive maintenance and repair yard. These all-welded steel structures can be easily modified to meet most needs including loading docks or ramps. Place these platforms throughout your layout wherever maintenance or loading is performed. Kit contains enough material for two "standard" platforms. See page 133 for complete Kit listing.

SILOS & GRAIN ELEVATOR

Grain Elevators and Silos are found scattered throughout agricultural America. The generic design of this kit allows total flexibility in construction. Silos are more commonly used by individual farmers and are usually smaller in size, fabricated in steel and used for storing winter feed such as corn silage. Grain elevators, frequently part of a co-op, are typically quite tall, made of concrete and used to accumulate or store harvest crops awaiting sale. This Kit will produce three tanks. Dimensions and capacities vary dependent on scale. See page 133 for complete Kit listing.



KIT-25



KIT-11

SAND TOWER

This all-welded steel Sand Tower is used in engine facilities throughout the country. Sand towers are usually located near the roundhouse or light service repair facility. The design of this sand tower permits installation between in and outbound tracks to service four lines. It's primary function is to supply clean, dry sand for gaining traction on slippery rails. See page 133 for complete Kit listing.

HEMI BOTTOM WATER TANK

This realistic modern Hemispherical Bottom Water Tank holds approximately 100,000 gallons and was used by many railroads during the busy steam era. Complete with a separate water spout and drain, this tank was commonly found in servicing facilities as well as along trackside. All-welded towers were constructed from the mid-1930's to present day. Adding rivets along the weld seams can date the tank back to the 1900's. Landscaping not included. See page 133 for complete Kit listing.



KIT-9



KIT-15

BULK OIL STORAGE TANK

This cone roof Bulk Oil Storage Tank is commonly found at petroleum refineries, bulk fuel terminals or chemical plants. Other applications can include water storage or liquids used in food processing. Tanks featuring all-welded construction became popular in the mid-1930's and are still being used today. Dimensions and capacities vary dependent on scale.

See page 133 for complete Kit listing.

LIQUID OXYGEN STORAGE TANK

This Liquid Oxygen Storage Tank is usually found where oxygen is used or produced in bulk quantities. Other products may also be stored in this vertical pressure vessel. This tank of all-welded construction is typical of those built from the mid-1930's to present day. Dimensions and capacities vary dependent on scale.

See page 133 for complete Kit listing.



KIT-17



KIT-18

SIDE BY SIDE VERTICAL TANKS

These Side By Side Vertical bulk liquid storage Tanks are commonly found at petroleum refineries, bulk fuel terminals or chemical plants. Other applications include industrial fire water storage, municipal water storage or liquids used in food processing. Any product stored at atmospheric pressure is suitable for these tanks. Tanks featuring this design were commonly used beginning in the mid-1930's, and are still used today. The majority were built in the 1950's for the growing petroleum industry. Tank dimensions and capacities vary dependent on scale.

See page 133 for complete Kit listing.

SPHERICAL STORAGE TANK

Spherical Storage Tanks are primarily used to store petroleum and chemical products stored under pressure such as Benzene, Amonia, Liquid Propane and Butane. Cryogenic products such as Liquid Oxygen and Nitrogen are also stored in this type of tank. All-welded spherical tanks were constructed in the mid-1940's to present.

Dimensions and capacities vary dependent on scale. See page 133 for complete Kit listing.



KIT-26



KIT-27

FLOATING ROOF STORAGE TANK

External Floating Roof Storage Tanks primarily store oil or chemicals whose vapor pressure causes evaporation at atmospheric pressure such as Crude Oil, Gasoline, Jet Fuel and Naptha. Dangerous H₂S (Hydrogen Sulfide) gases are present in all crude oils, necessitating the use of this tank. Floating roof tanks operate by the roof floating on top of the product being pumped into the tank, thus eliminating any vapor space and therefore vapor discharge. All-welded floating roof tanks were employed in the late 1940's, and are still being used today. Dimensions and capacities vary dependent on scale.

See page 133 for complete Kit listing.

UTILITY WATER TOWER

This flat bottom, dome roof Utility Water Tower is typically found at factories for fire water. Municipalities also employ these towers for potable water and as a means of maintaining water pressure. Legs may be shortened or even eliminated completely so that the tank can be installed on a building roof. All-welded water towers became popular in the mid-1930's and are still being constructed today. Adding rivets along the weld lines can date this tower back to the early 1900's. Tank dimensions and capacities vary dependent on scale. See page 133 for complete Kit listing.



KIT-16



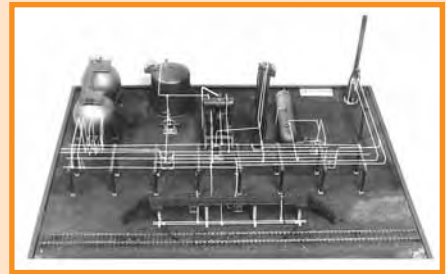
KIT-28

CONE ROOF WATER TOWER

The popular Cone Roof elevated Water Tank is typically found in industrial settings being used for fire water at factories, or potable water in communities and industry. The angled legs may be shortened for roof installations. This style of tank is often found in multiples in larger communities or facilities. All-welded elevated water tanks were constructed in the early 1940's, and are still quite popular today. Adding rivets along the weld lines dates the tank back to the early 1900's. Tank dimensions and capacities vary dependent on scale. See page 133 for complete Kit listing.

PETRO/CHEMICAL REFINERY

An authentic miniature Petro/Chemical Refinery developed by a professional design engineer with one of the country's leading consulting engineer and construction firms. This realistic Kit contains all the necessary parts to construct the model as pictured along with detailed blue prints and an instruction booklet. Engineered with flexibility, you can easily change equipment locations to fit your layout. Perfect for any 1950's to present day model railroad layout. Prior scratch building experience recommended. NOTE: Several of the other industrial Kits make excellent additions to this Refinery. See page 133 for complete Kit listing.



KIT-8



KIT-14

TWIN HORIZ. STORAGE TANKS

These Twin Horizontal Storage Tanks are commonly found at petroleum refineries, bulk fuel terminals or chemical plants. Other applications can include water storage or liquids used in food processing and manufacturing. Tanks featuring all-welded construction became popular in the mid-1930's and are still being used today. Dimensions and capacities vary dependent on scale. See page 133 for complete listing.

TWIN LP GAS STORAGE TANKS

These Twin horizontal LP Gas Storage Tanks are typically found throughout rural northern and central America in bulk fuel distributor and LP Gas retail outlets. LP Gas is commonly used for agricultural, industrial and residential heating as well as an up-and-coming vehicle fuel. Dimensions and capacities vary dependent on scale. See page 133 for complete Kit listing.



KIT-19



KIT-40

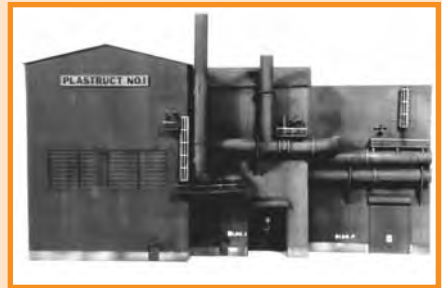
STEEL MILL BOTTLE CAR

Bottle Cars are an integral and unique piece of rolling stock for the steel industry. This Kit, originally created in cooperation with Dean Freytag and Railroad Model Craftsman (RMC), allows custom construction of 2 1/2 wheel Pollock Bottle Cars. Kit instructions are actually the RMC article originally published in November, 1994. A must for every layout incorporating a steel mill.

TRUCKS, COUPLERS AND HARDWARE NOT INCLUDED.

STEEL MILL FAKEFRONT

This Kit, developed by Dean Freytag to fill a void between two areas of the Fellows Steel Mill, is an impressive, yet simple, structure. The left building, originally intended as a hot metal car / ladle additive facility, is 12" (300mm) high x 9" (225mm) wide and only 3-1/2" (88mm) deep. The center and right buildings, intended as part of the supporting buildings for the basic oxygen furnace, are approximately 10" (250mm) high x 13" (325mm) wide, and 2" (50mm) deep (center building) and flush (right building). However, don't be limited by these intended uses. This Kit has the versatility to switch building positions and can easily be adapted as part of many industrial by-product facilities. It can also be used in multiple scales! A must for all layouts incorporating a steel mill or other industrial facilities.



KIT-30



KIT BUILDING SERVICE

For those railroaders who don't have the time or patience to build their own "TRACKSIDE SERIES" Kits but still desire the realism, we are pleased to now offer a Kit construction service. Call for more details.

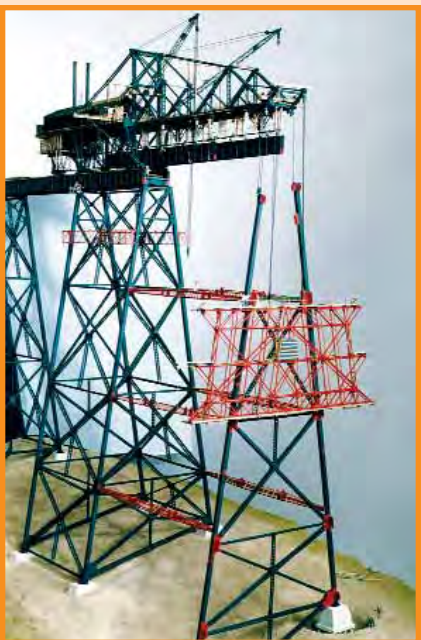


Photo courtesy of Bob Gardner, Salmon Arm, Canada



Photo courtesy of John Ackerman, Bellflower, CA

TRACKSIDE SERIES KITS

TRACKSIDE SERIES KITS

All "TRACKSIDE SERIES" Kits are "scratch model" Kits and contain detailed plans/instructions and the necessary plastic parts to complete the pictured model. The step-by-step instructions include information about the model proto-type, bills of material, detailed drawings and helpful construction tips. Colorful oil company decals are provided when appropriate.

THESE KITS ARE NOT INTENDED FOR NOVICE MODELERS.

KIT TYPE	DESCRIPTION	SCALE	CODE
KIT-1	Simple Span Bridges	HO	KIT-1001
KIT-2	Truss Bridge	HO	KIT-1002
	Truss Bridge	N	KIT-2002
	Truss Bridge	O	KIT-3002
	Truss Bridge	G	KIT-4002
KIT-5	Electrical Towers & Oil Well	HO	KIT-1005
KIT-7	Old Time Moving Bridge	HO	KIT-1007
	Old Time Moving Bridge	N	KIT-2007
	Old Time Moving Bridge	O	KIT-3007
KIT-8	Petro/Chemical Refinery	HO	KIT-1008
	Petro/Chemical Refinery	N	KIT-2008
	Petro/Chemical Refinery	O	KIT-3008
	Petro/Chemical Refinery	S	KIT-8008
KIT-9	Hemispherical Bottom Water Tank	HO	KIT-1009
	Hemispherical Bottom Water Tank	N	KIT-2009
KIT-10	Service Platforms	HO	KIT-1010
KIT-11	Sand Tower	HO	KIT-1011
KIT-12	Twin Lamp Posts	HO	KIT-1012
KIT-13	Billboards	HO	KIT-1013
KIT-14	Twin Horizontal Storage Tanks	HO	KIT-1014
	Twin Horizontal Storage Tanks	N	KIT-2014
	Twin Horizontal Storage Tanks	O	KIT-3014
KIT-15	Bulk Oil Storage Tank	HO	KIT-1015
	Bulk Oil Storage Tank	N	KIT-2015
	Bulk Oil Storage Tank	O	KIT-3015
KIT-16	Utility Water Tower	HO	KIT-1016
	Utility Water Tower	O	KIT-3016
KIT-17	Liquid Oxygen Storage Tank	HO	KIT-1017
	Liquid Oxygen Storage Tank	O	KIT-3017
KIT-18	Side By Side Vertical Tanks	HO	KIT-1018
	Side By Side Vertical Tanks	O	KIT-3018
KIT-19	Twin LP Gas Storage Tanks	HO	KIT-1019
	Twin LP Gas Storage Tanks	N	KIT-2019
	Twin LP Gas Storage Tanks	O	KIT-3019
KIT-25	Silos & Grain Elevator	HO	KIT-1025
	Silos & Grain Elevator	O	KIT-3025
KIT-26	Spherical Storage Tank	HO	KIT-1026
	Spherical Storage Tank	O	KIT-3026
KIT-27	Floating Roof Storage Tank	HO	KIT-1027
	Floating Roof Storage Tank	O	KIT-3027
KIT-28	Cone Roof Water Tower	HO	KIT-1028
	Cone Roof Water Tower	N	KIT-2028
	Cone Roof Water Tower	O	KIT-3028
KIT-30	Foundry FakeFront	HO	KIT-1030
KIT-40	Steel Mill Bottle Car	HO	KIT-1040



IN A HURRY?

Call our Toll Free 800 Order Line and pay by
VISA/MasterCard. (800) 666-7015 8:00 am-2:00 pm Pacific Time.